

# Joe's NEWS

Selected information from the city magazine "ONOJO"



Dec. 15th, 2023 issue (No.1)

←Scan the code to access English page of Onojo City

## Facilities Closed and Irregular Service during New Year Holidays

Regular Holiday Year-end and New Year Holidays

	Dec. 25	26	27	28	29	30	31	Jan. 1	2	3	4	5	
	Mon	Tue	Wed	Thu	Fri	Sat	Sun	Mon	Tue	Wed	Thu	Fri	
Onojo City Hall													
Community Center													
Madokapia													
Sukoyaka Koryu Plaza													
Onojo Cocoro-no-furusato-kan City Museum													
Reiwa Child Information Center													
Place for the youth, ユープレ (Yu-pure)													
Family Koryu Center													
Ikoi-no-Sato													
Ikoi-no-mori Forest (Campsite)													
Ikoi-no-mori Forest (Central Park, Sports Park)													
Madoka Park, Otogana Multipurpose Park													
Akasaka & Asahigaoka Tennis Court													
Schools Open to the Public													
Clean Ene-Park South (Burnable garbage)													
Recycle Plaza (Non-burnable garbage)													
Community Bus "Madoka"													
	Weekday Time Table				Holiday Time Table					Weekday Time Table			

△...Closed after 3:00pm

Regarding other public facilities, please check in the Dec.15<sup>th</sup> issue of the city magazine "Onojo" (written in Japanese) or contact us.

## Information on Clean Ene-Park South

Due to a regular inspection, you can't bring burnable garbage to this facility during the following period.

●Period Sat, Jan. 13<sup>th</sup> - Fri, Jan. 26<sup>th</sup>, 2024

<Remarks>

\*The facility will be closed after 3:00pm on Sun, Dec. 31<sup>st</sup> through Wed, Jan. 3<sup>rd</sup>, 2024. \*From Jan. 4<sup>th</sup>, will be operated as usual.

## Renewal of City Water Meter

City's water meter should be replaced with a new one every 8 years. A contractor will visit you to replace the water meter which expiry date is approaching. We will send notification letters to houses which fall under the replacement until a week before the replacement. While replacing, you cannot use tap-water for about 15 minutes. Please turn off all faucets until replacing work is finished.

●Period

Fri, Jan. 5<sup>th</sup> - Wed, Jan. 31<sup>st</sup>

●Subject Area

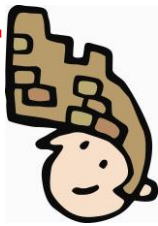
- ◇Zasshonokuma-machi ◇Oike
- ◇Mizuho-machi 3,4chome ◇Nishiki-machi ◇Kawarada
- ◇Murasakidai ◇Yokomine
- ◇Wakakusa ◇Hatagasaka

For application or further information, please contact Community Culture Section

Tel: 092-580-1876 Fax: 092-573-7791

E-mail: shakai@city.onojo.fukuoka.jp





# Joe's NEWS

Selected information from the city magazine "ONOJO"

Dec. 15th, 2023 issue (No.2)

## Garbage No-collection Dates

Garbage will not be collected on the following dates:  
Sun, Dec. 31<sup>st</sup> through Wed, Jan. 3<sup>rd</sup>, 2024

## Garbage No-collection Dates and Rescheduled Collection Dates

Type of Garbage	Burnable Garbage		Pet bottles (Plastic bottles) and White Plastic Trays	
No-collection Date	Sun, Dec. 31 <sup>st</sup>	Mon, Jan. 1 <sup>st</sup>	Tue, Jan. 2 <sup>nd</sup>	Wed, Jan. 3 <sup>rd</sup>
Rescheduled Collection Date	Fri, Dec. 29 <sup>th</sup>	Thu, Jan. 4 <sup>th</sup>	Fri, Jan. 5 <sup>th</sup>	Sun, Jan 7 <sup>th</sup>
Subject Area	<ul style="list-style-type: none"> <li>◇Otoganadai 1-3chome</li> <li>◇Otogana 1-3chome</li> <li>◇Oaza Otogana</li> <li>◇Mikasagawa 1,4,5chome</li> <li>◇Kawarada 1-5chome</li> <li>◇Akebono-machi 1-3chome</li> <li>◇Mizuho-machi 1-4chome</li> <li>◇Otoganahigashi 1-4chome</li> <li>◇Oike 1,2chome</li> <li>◇Kawakubo 1-3chome</li> <li>◇Hiranodai 1-4chome</li> <li>◇Murasakidai</li> <li>◇Minamiori 1,2chome</li> <li>◇Tsutsui 1-5chome</li> <li>◇Nishiki-machi 1-4chome</li> <li>◇Oaza Ushikubi</li> <li>◇Ushikubi 1-4chome</li> <li>◇Wakakusa 3,4chome</li> <li>◇Yokomine 1,2chome</li> <li>◇Hatagasaka 1,2chome</li> </ul>	<ul style="list-style-type: none"> <li>◇Shimooridanchi</li> <li>◇Oaza Naka</li> <li>◇Naka 1-3chome</li> <li>◇Otoganadai 1-3chome</li> <li>◇Otogana 1-3chome</li> <li>◇Mikasagawa 1,4chome</li> <li>◇Oaza Otogana 1-7chome</li> </ul>	<ul style="list-style-type: none"> <li>◇Kawarada 1-5chome</li> <li>◇Akebono-machi 1-3chome</li> <li>◇Mizuho-machi 1-4chome</li> <li>◇Otoganahigashi 1-4chome</li> <li>◇Oike 1,2chome</li> <li>◇Kawakubo 1-3chome</li> <li>◇Mikasagawa 5chome</li> <li>◇Tsutsujigaoka 1-6chome</li> <li>◇Miyanodai</li> </ul>	<ul style="list-style-type: none"> <li>◇A part of Oaza Kamiori in Kamiori Ward</li> <li>◇Kamiori 1-5chome</li> <li>◇Shimoori 5chome</li> <li>◇Chuo 1,2chome</li> <li>◇Mikasagawa 2,3chome</li> <li>◇Zasshonokuma-machi 1-5chome</li> <li>◇Sakae-machi 1-3chome</li> <li>◇Wakakusa 1,2chome</li> <li>◇Tsukinoura 1-5chome</li> </ul>

## Do you know your physical strength?

### Health Performance Measurement

Do you want to know the right exercise for you? Check your physical strength with the Health Performance Measurement in the presence of a doctor and a health exercise instructor and advise the right exercise for you.

### ●Subject Person

Onojo residents or who are working in Onojo City (Aged 40 and above)

Measuring Date	Venue
Thu, Jan. 18 <sup>th</sup>	Sukoyaka Koryu Plaza

### ●Contents

- ◇Measurement of endurance using bicycle ergometer under monitoring electrocardiogram
- ◇Medical interview
- ◇Electrocardiogram
- ◇Body composition measurement
- ◇Various physical fitness measurement (balance, flexibility, grip strength, locomotive syndrome risk test)



### ●Limit 20 people (First- come first-served basis)

### ●Time Required approximately 1.5hrs

### ●Fee 1,800 yen

### ●Necessary Item

Copy of medical check-up results or equivalent health check-up results issued within a year, Indoor sports shoes, Drinks, Sports clothes, Towel, etc.

\*In case that you are under any medical treatment, you need an authorization from your doctor.

### ●How to Apply

Call (Phone: 092-501-2322) or visit Health Promotion Office at Sukoyaka Koryu Plaza during opening hours: Mon and Wed-Sat except national holidays, 9:00am-6:00pm (Japanese-speaking staff Only) or contact us.

Joe'BOX



Don't feel alone.  
Please email us at [shakai@city.onojo.fukuoka.jp](mailto:shakai@city.onojo.fukuoka.jp)  
if you have any problems living in Onojo City.

For application or further information, please contact  
Community Culture Section

Tel: 092-580-1876 Fax: 092-573-7791

E-mail: [shakai@city.onojo.fukuoka.jp](mailto:shakai@city.onojo.fukuoka.jp)





# Joe's NEWS

Selected information from the city magazine "ONOJO"

Dec. 15th, 2023 issue (No.3)

## School Expense Subsidy (Advanced Application)

### -School supplies and school lunch fees will be subsidized-

Part of the school supply expense will be subsidized for families having financial difficulties. Please note that you need to apply for the School Expense Subsidy every year.

#### ●Subject person

- ◇Elementary school student or Junior High School student in Onojo City who will be new 1<sup>st</sup> grade student in April 2024 and whose family falls under any of the following conditions;
- ◇Junior High School student in Onojo City who will be 2<sup>nd</sup> grade or 3<sup>rd</sup> grade student in April 2024 and apply for the school expense subsidy for school lunch from April 2024 and whose family falls under any of the following conditions;

#### (Conditions)

- ◆A family receiving Child Rearing Allowance
- ◆A family whose total residential tax (per income levy) in FY2023 is under the base amount
- ◆A family who went through suspension or abolition of public assistance within a year

#### ●Application Period and Acceptance

From Fri, Jan. 5<sup>th</sup> to Thu, Feb. 29<sup>th</sup> at Education Policy Section, Onojo City Hall, 5F (Weekday, 8:30am-5:00pm) or at each community center (9:00am-9:00pm except for 3<sup>rd</sup> Tuesday)

\*If you apply during application period and are qualified for the aid, you can receive fee for school supplies on 25<sup>th</sup> next month of application. Subsidy for other expenses will be supplied after July. (If the date, 25<sup>th</sup>, falls on a weekend and a national holiday, the following weekday will be the date of payment.)

\*Though you can submit the application form at each community center (Japanese-speaking staff only), please visit Education Policy Section if you have any inquiries.

#### ●Necessary Items

- ◆Application form (You can download from the HP of Onojo City or receive at Education Policy Section)
- ◆Passbook of transfer account with the name of child's guardian as the account holder
- ◆Necessary documents which proves that you are a qualified recipient

\*For further information, please contact us.

## Application for using "Randoseru-Club", After-school Day Care Service

City accepts the application for "Randoseru-Club", After-school Day Care Service. We provide 2 types of registration. One is G-registration and the other is R-registration. This time, we only accept applications for G-registration. Application for R-registration starts from April.

### G-registration

- Available 5 weekdays on school days.
- After hours care is available.
- Available during school holidays (spring, summer and winter holidays, compensatory days off, Saturdays).
- Have requirements.

### R-registration

- Choose 3 days from school days.
  - After hours care is not available.
  - Not available during school holidays (spring, summer and winter holidays, compensatory days off, Saturdays).
- You might use 2 types together for spring, summer and winter holidays or Saturdays if you fulfill the conditions we require. For further information, please contact us.
- No requirements

Anyone who is elementary school 1<sup>st</sup> - 6<sup>th</sup> grade students can apply.

\*Days you can choose differ from school to school.

\*The number of students we can accept is limited.



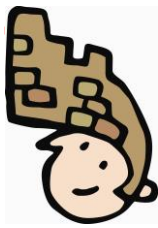
(continued on No.4)

For application or further information, please contact  
Community Culture Section

Tel: 092-580-1876 Fax: 092-573-7791

E-mail: shakai@city.onojo.fukuoka.jp





# Joe's NEWS

Selected information from the city magazine "ONOJO"

Dec. 15th, 2023 issue (No.4)

## Application for using "Randoseru-Club", After-school Day Care Service, (G-registration) of Academic Year 2024

● **Day Care Period** Apr. 1<sup>st</sup>, 2024 - Mar. 31<sup>st</sup>, 2025

\*except Sundays, National holidays, Bon Holidays from Aug. 13<sup>th</sup> to Aug. 15<sup>th</sup>, Year-end and New-year Holidays from Dec. 29<sup>th</sup> to Jan. 3<sup>rd</sup>

### Requirement for Weekdays

● **Subject Person** Those who fall under all of the following conditions.

- ◆ Elementary School new 1<sup>st</sup> - new 6<sup>th</sup> grade students
- ◆ Those whose guardians or house mates aged 20 - 64 living at the same address are unable to provide supervision until 3:00pm for 12 days or more per month (excluding Sundays) due to work or other commitments.

### Requirement for Saturdays

● **Subject Person** Those who fall under all of the following conditions.

- ◆ Elementary School new 1<sup>st</sup> - new 6<sup>th</sup> grade students
- ◆ Those whose guardians or house mates aged 20 - 64 living at the same address are unable to provide supervision for 4 hours or more between 8:00am and 5:00pm on Saturday due to work or other commitments. The guardians or housemates should have 1 day or more with the condition mentioned above per month (excluding Sundays).

### Open Days and Hours

- ◆ Weekdays After-school - 5:00pm (-7:00pm)\*
- \*During spring, summer and winter holidays, 8:00am-5:00pm (-7:00pm)\*

<Note>

- \*Regular care time is until 5:00pm.
- \*After hours care (extended Hours) is from 5:00pm to 7:00pm.
- \*You may apply for after hours (extended-hours) care provided that you apply for regular care.

- ◆ Saturdays 8:00am - 5:00pm

\*No after hours (extended hours) care on Saturday

(continued on the right column)

## Application for using "Randoseru-Club", After-school Day Care Service, (G-registration) of Academic Year 2024

● **Day Care Cost** (A fee exemption is available)

- ◆ Weekdays 4,680yen / month (including spring, summer and winter holidays)
- ◆ Weekdays 4,680yen / month (excluding spring, summer and winter holidays)
- \*Weekday day care includes compensatory days off.

- ◆ After hours 3,820yen / month

\*You may apply for after-hours (extended-hours) care provided that you apply for regular care.

- ◆ Saturday 2,000yen / month

● **Application Form Distribution Date** from Fri, Dec. 15<sup>th</sup>

### How to Apply

Fill in the Application Form\*<sup>1</sup> (distributed at Education Promotion Section (5F, Onojo City Hall) and all Community Centers) and submit it together with necessary documents such as the guardian's Work Certificate (Kinmu Shomeisho) to the Education Promotion Section at City Hall\*<sup>2</sup>.

\*<sup>1</sup>You can download the application form from the HP of Onojo City.

\*<sup>2</sup>Application acceptance is on weekdays during opening hours.

\*<sup>2</sup>You can submit it to a community center if you don't have difficulty speaking Japanese.

● **Application Period** Fri, Jan.5<sup>th</sup> - Mon, Jan. 29<sup>th</sup>

\*If you apply after the application period, it would be difficult to join from the beginning of Academic Year.

<note>

\*Each After-school Day Care Center is located inside or near each elementary school.

\*If you have difficulty communicating in Japanese, please contact us.

For further details, please contact us.



(continued on No.5)

Joe'BOX

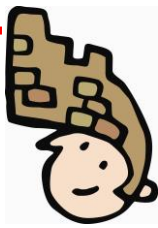


Don't feel alone.  
Please email us at  
[shakai@city.onojo.fukuoka.jp](mailto:shakai@city.onojo.fukuoka.jp)  
if you have any problems living in Onojo City.

For application or further information, please contact  
Community Culture Section  
Tel: 092-580-1876 Fax: 092-573-7791  
E-mail: [shakai@city.onojo.fukuoka.jp](mailto:shakai@city.onojo.fukuoka.jp)







# Joe's NEWS

Selected information from the city magazine "ONOJO"

Dec. 15th, 2023 issue (No.5)

## Application for using "Randoseru-Club", After-school Day Care Service, (G-registration) of during Spring Holidays

- **Subject Person** Those who fall under all of the following conditions.
  - ◆ Elementary School new 1<sup>st</sup> - new 6<sup>th</sup> grade students and current 6<sup>th</sup> grade students
  - ◆ Those whose guardians or house mates aged 20 - 64 living at the same address are unable to provide supervision for 4 hours or more per day between 8:00am and 5:00pm due to work or other commitments. The guardians or housemates should have 12 days or more with the condition mentioned above per month (excluding Sundays).
- \*The care is available until Thu, Mar. 31<sup>st</sup>, 2024 for current 6<sup>th</sup> grade students and from Fri, Apr. 1<sup>st</sup>, 2024 for new 1<sup>st</sup> grade students.
- \*Regarding after-hours care and care on Saturdays, there are other conditions.
- **Day Care Period**
  - ◆ New 1<sup>st</sup> grade students:
    - Mon, Apr. 1<sup>st</sup> - Thu, Apr. 11<sup>th</sup> (an entrance ceremony) or
    - Mon, Apr. 1<sup>st</sup> - A day before school lunch starts
  - ◆ New 2<sup>nd</sup> - 6<sup>th</sup> grade students:
    - Fri, Mar. 22<sup>nd</sup> (a closing ceremony) – A day before school lunch starts
  - ◆ Current 6<sup>th</sup> grade students:
    - Thu, Mar. 14<sup>th</sup> (a graduation ceremony) – Sun, Mar. 31<sup>st</sup>
- \*Except Sundays
- \*You use the day care though the holidays. One day care is not available.
- \*You may apply for after hours care provided that you apply for regular care.
- \*Please contact us for details.

(continued on the right column)

## Application for using "Randoseru-Club", After-school Day Care Service, (G-registration) of during Spring Holidays



- **Day Care Cost** (A fee exemption is available)
    - ◆ Weekdays 4,680yen / month
    - ◆ After hours 3,820yen / month
      - \*You may apply for after-hours (extended-hours) care provided that you apply for regular care.
    - ◆ Saturday 2,000yen / month
  - **Distribution Date** from Fri, Dec. 15<sup>th</sup>
  - **How to Apply**

Fill in the Application Form\*<sup>1</sup> (distributed at Education Promotion Section (5F, Onojo City Hall) and all Community Centers) and submit it together with necessary documents such as the guardian's Work Certificate (Kinmu Shomeisho) to the Education Promotion Section at City Hall\*<sup>2</sup>.

    - \*<sup>1</sup>You can download the application form from the HP of Onojo City.
    - \*<sup>2</sup>Application acceptance is on weekdays during opening hours.
    - \*<sup>2</sup>You can submit it to a community center if you don't have difficulty speaking Japanese.
  - **Application Period** Tue, Jan.30<sup>th</sup> - Fri, Feb. 9<sup>th</sup>
    - \*Regarding holidays, please make sure to apply during the application period mentioned above. Otherwise you cannot use the service.
  - <note>
    - \*Each After-school Day Care Center is located inside or near each elementary school.
    - \*If you have difficulty communicating in Japanese, please contact us.
- For further details, please contact us.

Joe'BOX



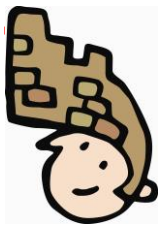
Don't feel alone.  
Please email us at [shakai@city.onojo.fukuoka.jp](mailto:shakai@city.onojo.fukuoka.jp)  
if you have any problems living in Onojo City.

For application or further information, please contact  
Community Culture Section

Tel: 092-580-1876 Fax: 092-573-7791

E-mail: [shakai@city.onojo.fukuoka.jp](mailto:shakai@city.onojo.fukuoka.jp)





# Joe's NEWS

Selected information from the city magazine "ONOJO"

Dec. 15th, 2023 issue (No.6)

## Certificate Issuance Service at Convenience Store Starts from April 2024

We start Certificate Issuance Service at convenience stores from April 2024. It becomes possible to obtain certificates at convenience stores using My Number Card (Individual Number Card) (without filling in a paper application form) from April 2024.

### ●Start of Service

from April 2024 (subject to change)

### ●Places that Certificates can be Obtained

Convenience stores which have multi-copy machines available for the issuance of the certificates

### ●Certificates that can be Obtained

- ◇Copy of residence certificate ◇Certificate of Seal Registration
- ◇Taxation Certificate/Tax Exemption Certificate, Income certificate (for the year 2022 only)

### Necessary Items to Obtain the Certificates

- ◇My Number Card ◇4-digit pin code

\*We will provide the service to issue the certificates using My Number Card or Citizen Card (Shimin Card) at Onojo City Hall and each community center.

\*For details such as issuance fee, we will inform you as soon as it is decided.

### ●Increasing Use of My Number Card

A My Number Card is a plastic card which contains an IC chip, and the bearer's name, address, My Number (the Individual Number), and ID photograph, etc., are displayed on it. This card can be used to verify identify on line safely and surely, therefore, it will be a necessary item in a digital society.

### ●My Number Card can be used for...

- ◇Verifying identity for mobile phone contracts and member registration
- ◇Health Insurance Card (can be used only at medical institutions installing a My Number Card reader.)
- ◇Filing a final tax return through e-Tax (online).
- ◇One-stop special application of Hometown Tax Donation, Furusto Nozei
- ◇Obtaining the certificates such as residence certificate, certificate of seal registration and taxation certificate, etc. through **City Online Application**.

\*You can check, register and change your registration status such as registration of My Number Card for the use of health insurance card and bank account information to receive allowances through **Mynportal** website.

(Continued on the upper right column)

## Certificate Issuance Service at Convenience Store Starts from April 2024



【QR Code for City Online Application】



【QR Code for Mynportal website】

For further information, please contact us.

## Onojo Cocoro-no-furusato-kan City Museum

Visitors are able to learn the history of Onojo City easily and widely through exhibitions.

### ●Closed Every Monday

\*If Monday falls on a public holiday, the museum is closed on the following weekday.

### ●Hours 9:00am - 7:00pm

### ●Admission Permanent Exhibition: Free

\*Special Exhibition: Charged

### ●Address 3-8-3 Akebono-machi, Onojo City



Joe'BOX



Don't feel alone.

Please email us at

[shakai@city.onojo.fukuoka.jp](mailto:shakai@city.onojo.fukuoka.jp)

[if you have any problems living in Onojo City.](#)

For application or further information, please contact  
Community Culture Section

Tel: 092-580-1876 Fax: 092-573-7791

E-mail: [shakai@city.onojo.fukuoka.jp](mailto:shakai@city.onojo.fukuoka.jp)



## Akachan (baby) Hiroba

Come join us and have a relaxing time with other mothers!

- **Subject Person** 3 months -12 months old child and mother  
\*It is not acceptable to bring siblings.
- **Contents** ◇Talk about child-rearing ◇Parent-child play ◇Reading stories  
◇Parenting consultation

Subject Person	Date and time	Venue
Those who live in South / East Community Area	Mon, Jan. 15 <sup>th</sup> 10:30am-12:00pm	Reiwa Kodomo Joho Center(Reiwa Children Information Center), Kosodate-oen (support for child raising) Floor (Sukoyaka Koryu Plaza 3F)
Those who live in North Community Area	Mon, Jan. 22 <sup>nd</sup> 10:30am-12:00pm	
Those who live in Central Community Area	Mon, Jan. 29 <sup>th</sup> 10:30am-12:00pm	

(Reception: from 10:00am - ) \*Please attend in the community area you live.

● **Fee** Free ● **Limit** 50 groups / each day (First-come first-served basis)

● **Items to bring** swaddle blanket or bath towel

\*Limited Parking



## Introduction of the App "Boshimo" to record maternal and child health

We introduced the app "Boshimo" to provide continuous support from early pregnancy to early childhood. By registering this app, you can receive the notice from Onojo City, use it to record maternal health during pregnancy, child growth, vaccination schedule, etc. and share the information with your family.

\*You can download it for free. (The usage fee must be borne by users.)

\*It is not an electric version of paper Maternal and Child Health Handbook. You need a paper Maternal and Child Health Handbook at your child's health checkup and vaccination.

For further information, please contact us.



【QR Code to access the app "Boshimo"】

## Nobinobi Hiroba

Why don't you experience parent-child play with our day-care center staff and interact through picture book reading?

● **Subject Person** Children aged 1 - 2 years and 11 months and their guardians living in Onojo City

\*Please consult as to participation of siblings.



● **Date and Time**

Date	Time	Venue
Thu, Jan. 11 <sup>th</sup>	10:45am - 11:45am (Reception:10:30am-)	Reiwa Kodomo Joho Center(Reiwa Children Information Center), Kosodate-oen (support for child raising) Floor (Sukoyaka Koryu Plaza 3F)
Fri, Jan. 12 <sup>th</sup>		
Fri, Jan. 26 <sup>th</sup>		
Tue, Jan. 30 <sup>th</sup>		

\*Multiple applications are not acceptable.

● **Contents** Drawing pictures

● **Necessary Items** ◇water bottle ◇towel ◇extra clothes

\*Please join wearing casual clothes.

● **Fee** free ● **Limit** 12 groups / each day (First-come first-served basis)

● **Application Period** from Wed, Dec. 20<sup>th</sup> to Tue, Dec. 26<sup>th</sup> (1:00pm-5:00pm)

\*except Saturday, Sunday and National Holiday

Joe'BOX



Don't feel alone.

Please email us at

[shakai@city.onojo.fukuoka.jp](mailto:shakai@city.onojo.fukuoka.jp)

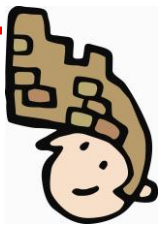
[if you have any problems living in Onojo City.](mailto:shakai@city.onojo.fukuoka.jp)

For application or further information, please contact  
Community Culture Section

Tel: 092-580-1876 Fax: 092-573-7791

E-mail: [shakai@city.onojo.fukuoka.jp](mailto:shakai@city.onojo.fukuoka.jp)





# Joe's NEWS

Selected information from the city magazine "ONOJO"

Dec. 15th, 2023 issue (No.8)

## Novel Coronavirus (COVID-19) Vaccination

### ● Individual Vaccination (persons aged 12 years old or older)

\*If you want to get a COVID-19 vaccine, please make a reservation at medical institutions.

\*A list of medical institutions conducting the individual vaccination in Onojo City is on the Dec. 15<sup>th</sup> issue of the City Magazine "Onojo" (Written in Japanese). Please check it or contact us. Your family doctor might conduct the individual vaccination even if it is not on the list.

### ● Vaccination Fee

Free

\*In the case that you receive treatment, you need to pay the fee which is covered by insurance.

### ● Number of Times

Once during the period from Wed, Sep. 20<sup>th</sup>, 2023 to Sun, Mar. 31<sup>st</sup>, 2024, in principle

### ● Vaccination Interval

3 or more months after the previous COVID-19 vaccination

### ● Vaccine Type

Pfizer COVID-19 vaccine targeting Omicron subvariant XBB.1.5

We will conduct mass vaccination on the following dates. If you want get the vaccine at the mass vaccination, please make a reservation at Onojo City COVID-19 Vaccination Call Center or Onojo City COVID-19 Vaccination Reservation Website.

\*For further information regarding making a reservation, please see the right column.

### ● Mass Vaccination Schedule in January (subject to change)

Sat. January 13 <sup>th</sup>	Sat. January 20 <sup>th</sup>	Sat. January 27 <sup>th</sup>
-------------------------------	-------------------------------	-------------------------------

### ● Mass Vaccination Venue

Sukoyaka Koryu Plaza 【4-2-1 Kawarada, Onojo City】

\*For further details, please check the Dec. 15<sup>th</sup> issue of the City Magazine "Onojo" (Written in Japanese) or contact us.

(Continued on the right column)

## Novel Coronavirus (COVID-19) Vaccination

### ● How to make a vaccination reservation

◇By Phone ◇Online

\*Please prepare your vaccination ticket at hand.

\*If you need language support at the mass vaccination venue, please let us know when making a reservation.

\*If you cancel your vaccination reservation for some reason, please let us know by one day before your vaccination day by phone or online. We only accept cancellation on the day of your vaccination day by phone.

### ◆ Online



【Onojo City COVID-19  
Vaccination Reservation Website】

### ◆ By Phone

Onojo City COVID-19 Vaccination Call Center at **092-580-1892**

\*Reception time:

◇Weekdays 9:00am - 7:00pm

◇Saturdays, Sundays and National holidays 9:00am - 5:00pm

\*Closed from Fri, Dec. 29<sup>th</sup> to Wed, Jan. 3<sup>rd</sup>

(Continued on No.9)

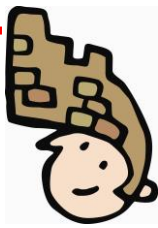
For application or further information, please contact  
Community Culture Section

Tel: 092-580-1876 Fax: 092-573-7791

E-mail: shakai@city.onojo.fukuoka.jp







# Joe's NEWS

Selected information from the city magazine "ONOJO"

Dec. 15th, 2023 issue (No.9)

## Novel Coronavirus (COVID-19) Vaccination

### Consultation regarding COVID-19 in foreign languages

For consultation regarding COVID-19 in foreign languages, please contact the phone numbers below.

●Fukuoka Multilingual Assistance and Information Center

**TEL: 0120-279-906 (Toll-free)**

\*Reception Time: 10:00am - 7:00pm \*except Dec. 29<sup>th</sup> - Jan. 3<sup>rd</sup>

\*Support Languages: Japanese, English, Chinese, Korean, Vietnamese, Nepalese, Indonesian, Tagalog, Thai, Malay, Spanish, French, German, Italian, Russian, Portuguese, Myanmar, Khmer, Mongolian, Sinhala, Hindi, Bengali

\*Reception Time will be changed.

Reception Time: 10:00am - 6:00pm (from Thu, Jan. 4<sup>th</sup>)

◇Telephone Consultation Service by Ministry of Health, Labour and Welfare

●Regarding Novel Coronavirus Vaccines

**TEL: 0120-761-770 (Toll-free)**

\*Reception Time:

◇Japanese, English, Chinese, Korean, Portuguese, Spanish: 9:00am - 9:00pm

◇Thai: 9:00am - 6:00pm ◇Vietnamese: 10:00am - 7:00pm

\*Service is provided every day including weekends and holidays.

●Medical consultation such as side effect

Dedicated COVID-19 Vaccine Phone Number

**TEL: 092-687-4884**

\*Reception Time: 9:00am - 5:00pm

\*Service is provided on weekends and national holidays as well as weekdays.

\*Support Languages: English, Chinese, Korean, Vietnamese, Indonesian, Tagalog, Thai, Nepali, Malay, Spanish, Portuguese, German, French, Italian, Russian, Khmer, Myanmar, Sinhalese, Mongolian

## Consultation Service for Novel Coronavirus Infection (COVID-19)

### ●Consultation for Visiting Medical Institution

If you suspect that you might have been infected with COVID-19, please contact your family doctor, Fukuoka Prefecture COVID-19 General Consultation Call Center or Health and Welfare Environment Office before visiting a medical institution.

[As to consultation in foreign language, please contact the number below.](#)

**Fukuoka International Medical support Center TEL: 092-286-9595**

\* Available all year round (24 hours per day, 365 days per year)

\*Supported Languages 21 languages

English, Chinese, Korean, Thai, Vietnamese, Indonesian, Tagalog, Nepali, Malay, Spanish, Portuguese, German, French, Italian, Russian, Khmer language, Myanmar, Sinhara, Mongolian, Hindi, Bengali

- Japanese Only -

**Fukuoka Prefecture Consultation Call Center for COVID-19**

TEL: 050-3665-8126 \*24 hours per day

**Chikushi Health and Welfare Environment Office**

TEL: 092-513-5584 \*Weekday only 8:30am - 5:15pm

## Information on Opening Hours

Dec. 18<sup>th</sup> Onojo Cocoro-no-furusato-kan City Museum will be CLOSED

Dec. 20<sup>th</sup> Madokapia will be CLOSED

Dec. 23<sup>rd</sup> Citizen Service Section will be open from 9:30am to 12:30pm

Dec. 25<sup>th</sup> Onojo Cocoro-no-furusato-kan City Museum will be CLOSED

**For application or further information, please contact  
Community Culture Section**

**Tel: 092-580-1876 Fax: 092-573-7791**

**E-mail: shakai@city.onojo.fukuoka.jp**



Joe'BOX



**Don't feel alone.**

**Please email us at**

**[shakai@city.onojo.fukuoka.jp](mailto:shakai@city.onojo.fukuoka.jp)**

**[if you have any problems living in Onojo City.](#)**

\*Information on this issue: as of Mon, Dec. 4<sup>th</sup>